

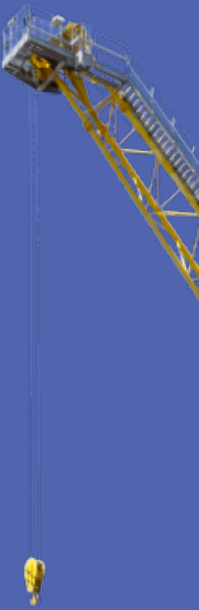
YOUR GLOBAL ITALIAN BREAKBULK PORT

Ports of Genoa @
Breakbulk Europe 2024
hall 2.5 stand 2G72



CONTENTS

The Ports Of Genoa	4
Four Ports, One Port Authority	4
Efficient Integration With The Supply Chains	4
Committed To Sustainability	4
Worldwide Coverage	6
Specific Handling Solutions For All Cargo	6
Port Of Vado Ligure	8
Forship	9
Vado Gateway	10
Reefer Terminal	11
Port Of Savona	12
But	13
Grimaldi Group Savona Terminal Auto	14
Savona Terminals	15
Port Of Genoa Pra'	16
PSA Genova Pra' Terminal	17
Port Of Genoa	18
Messina Group - Intermodal Marina Terminal	19
Terminal San Giorgio	20
FO.RE.S.T	21
Spinelli Group - Genoa Port Terminal	22
C. Steinweg - GMT	23
PSA Sech Terminal Contenitori Porto di Genova	24
Stazione Marittime S.P.A	25
Port Directory	26





THE PORTS OF GENOA

FOUR PORTS, ONE PORT AUTHORITY

Genoa, Pra', Savona and Vado Ligure, the Ports of the Western Ligurian Sea - grouped together as the Ports of Genoa - rank as Italy's pre-eminent port range in terms of total throughput, commodity diversity and economic output.

Located across a total surface area of approximately 7 million sqm, 35 specialised terminals cater for all key commodity sectors: container, general cargo,

Ro-Ro and bulk. Specifically, the Ports of Genoa rank as the leading Mediterranean gateway port for containers, project and heavy-lift cargo, and fruit.

With over 160 deep-sea, short-sea, feeder and Ro-Ro regular liner services, the Ports of Genoa are connected to over 450 ports worldwide.

EFFICIENT INTEGRATION WITH THE SUPPLY CHAINS

Strategically located in the northernmost point of the Mediterranean Sea, at the heart of Europe, easily accessible overland across fast road and rail connections and by sea across the ultra-large container vessels which can dock in the natural deepwater, the Ports of Genoa are equipped to consolidate their leadership as the premier Mediterranean gateway to the major consumer centres in Europe. The industrial heartland of Europe sits within a 600-km range of the ports: Northern Italy, Switzerland, Bavaria, Baden-Wurtemberg, Austria are the natural catchment areas of POG. Road and railway last mile infrastructures are the subject of an

extensive renovation plan aimed at further improving the accessibility of port terminals. In addition, the Port Authority is boosting the development of digital technologies, to reduce dwelling and transit times in the ports, by developing smart port terminal gate access, mobile apps for truckers (including vehicle pre-notification and booking systems), automated data exchange between all the players of the supply chain, including Customs.

COMMITTED TO SUSTAINABILITY

The Ports of Genoa are firmly committed to contributing to the achievement of the UN Sustainable Development Goals, the IMO and EU planned CO2 emissions targets. The environmental performance of the port is being improved across a comprehensive investment plan aimed at reducing the carbon footprint of the port cluster. Green projects include the installation of ship-to-shore power connections along all the port quays, the development of smart

energy management systems, from renewable energy production to energy storage and distribution to port users, the implementation of green fuel management and filling plants, port and ship waste management improvement, the urban regeneration of the areas between the ports and the towns.

4

Port basins

700_{ha}

Port area

27_{km}

Total quay length

100

Berths

35

Terminals

80

Ship bulding
and refitting companies

80

Shipping agencies

300

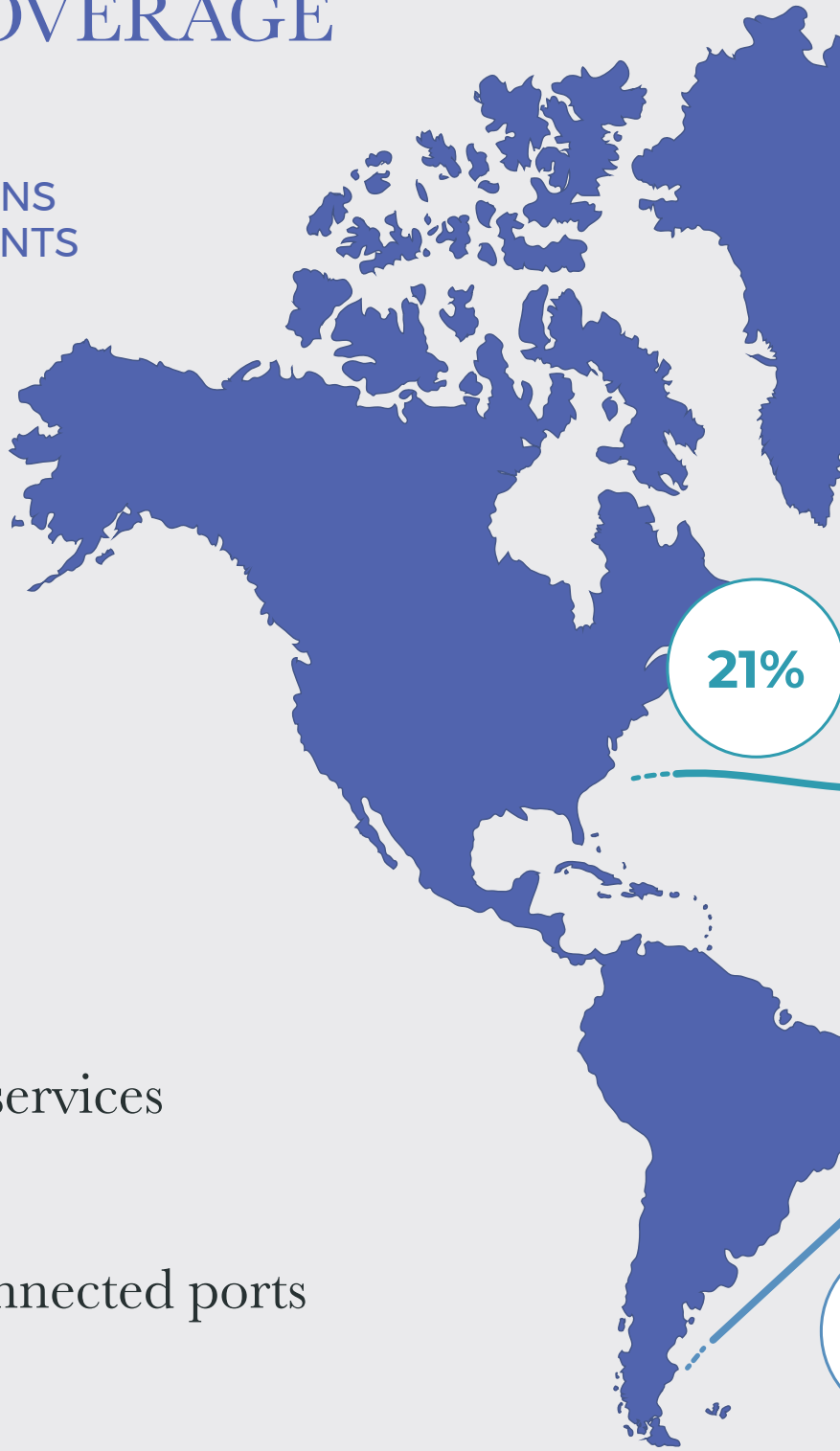
Freight forwarding
agencies

WORLDWIDE COVERAGE

SPECIFIC HANDLING SOLUTIONS FOR ALL CARGO REQUIREMENTS

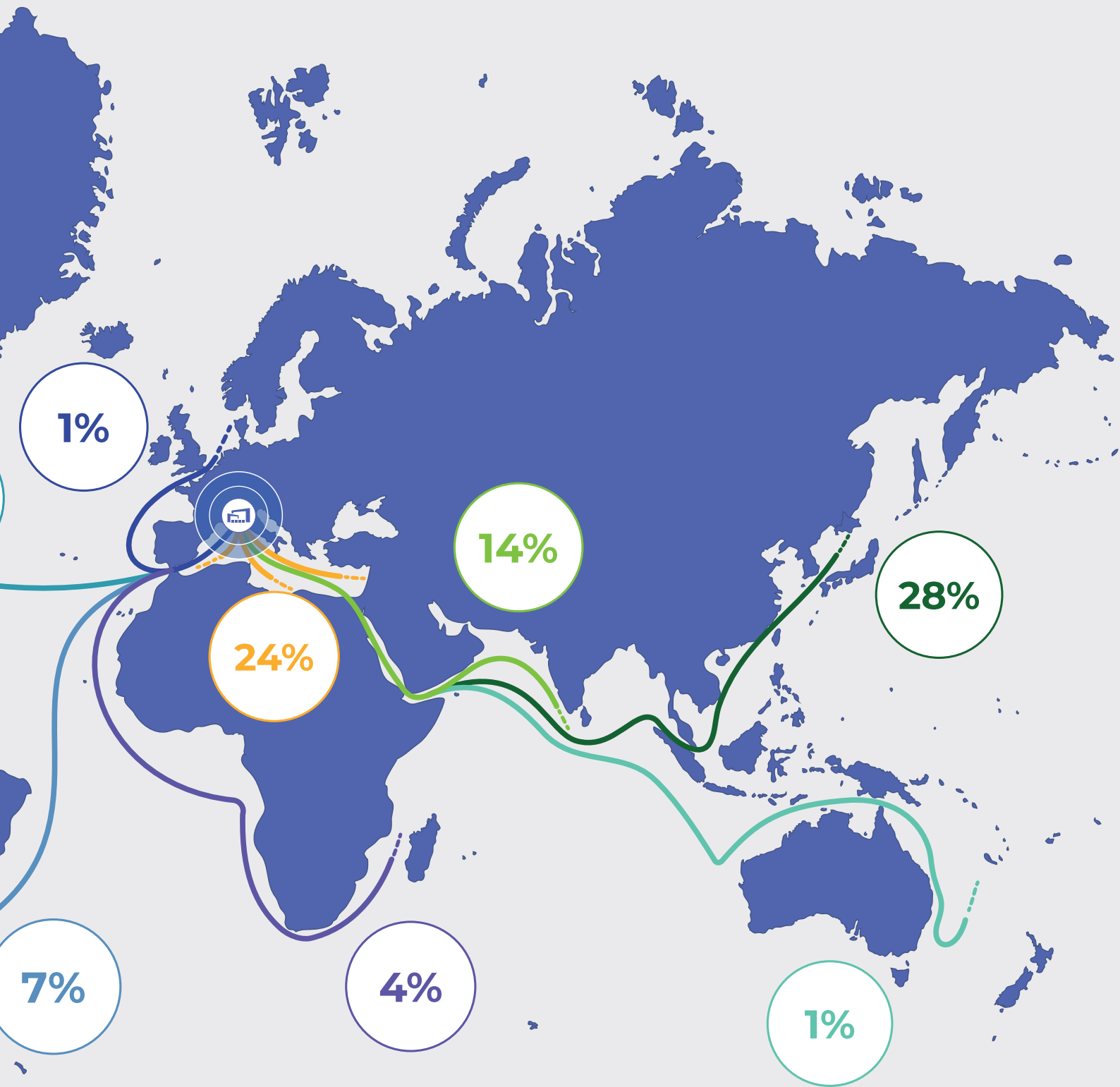
The Ports of Genoa feature specialised terminals offering the best transport solutions for all types of commodities that cannot be loaded in containers: general cargo (cellulose and timber, fruit and perishable goods), rolling stock (lorries, new motor vehicles, machinery, railway vehicles) or special cargoes (project cargo, heavy-lift and oversize cargo).

Breakbulk amounts to almost a quarter of the total Ports of Genoa throughput, with over 15 million tons handled yearly.



160 Regular liner services

450 Worldwide connected ports



Central - North America

Northern Europe

South America

Med Region

Africa

Far East

Middle East - India

Australasia

PORT OF VADO LIGURE



QUAY	Calate Nord and Sporgente "Enrico Bricchetto" 4 Berths for Ro-Ro ships (depth 9.5 m)
STORAGE AREA	Parking yard 45,000 sqm; Warehouse 1,500 sqm
OPERATING CAPACITY	Ships length up to 230 m

FORSHIP

In the Port of Vado Ligure, Forship operates a passenger and freight ferry terminal which covers a total of 50,000 sqm with 4 Ro-Ro berths and features a 45,000-sqm parking yard and a 1,500 sqm-warehouse. The terminal is homeport to "Corsica Ferries - Sardinia Ferries" shipping company, which offers all-year regular services to Corsica (with up to 3 departures per day in summer), and can host passengers as well as Ro-Ro cargoes.

The passenger facilities in the terminal building consist of a ground-floor ticket office, snack bar, nursery, waiting hall with children's play area and panoramic terraces.

The terminal is equipped to handle oversize freight that accounts for 5% of its trade volumes. Fast access across a direct road link to the Savona motorway exit (3 km), and the excellent port infrastructure, has consolidated Terminal Forship's position as a focal point for ferry services between Italy and Corsica.



VADO GATEWAY

VADO LIGURE

Vado Gateway, operated by APM Terminals, is the first semi-automated port in Italy and amongst the most advanced in the Med, featuring a fully automated gate and stacking yard with an overall yearly capacity of 900.000 TEUs.

The 700 m deep-sea berth, equipped with four ship-to-shore cranes, with a maximum 100 tons 'under hook' and 65-ton capacity in twin lift configuration, can handle the latest Ultra-Large Container Vessels.

Efficiency and short truck-turntimes (around 30 minutes) are achieved using a truck appointment system which is fully integrated with the Terminal Operating System.

TERMINAL CAPACITY	900,000 TEU
QUAY	Length: 700 m Depth: 17.25 m
HANDLING EQUIPMENT	4 super post panamax cranes (23 containers wide) 21 Automated RMG cranes 19 Hybrid straddle carriers 950 Reefer plugs
ROAD ACCESS	14 Fully Automated Lanes Truck Appointment System
INTERMODALITY	Railway target: 40% of total traffic (15-18 trains/day)



REEFER TERMINAL VADO LIGURE



The multipurpose Reefer Terminal, operated by APM Terminals, ranks as the Mediterranean's leading fruit terminal, handling up to 500,000 t. of fresh produce per annum. The bananas and pineapple trade covers about 50% of the business, whilst citrus and other fruit from South Africa, West Africa, Central/South America and New Zealand account for the remainder.

In the Port of Vado Ligure, Reefer Terminal operates an on-dock warehouse for a total of 24,000 sqm, equipped with 15 independent controlled temperature cells and 4 conditioned areas, for a total instant storage capacity of 13,000 pallets. The stacking yard has an annual capacity of 250,000 TEUs and offers 500 reefer plugs.

Customs, scanner, phytosanitary and PIF (veterinary) inspection areas are available inside the terminal, backed by a wide range of ancillary services.

In recent years, Reefer Terminal has developed a high degree of specialisation in breakbulk cargo handling, namely, rail cars, locomotives and project cargo.

TERMINAL AREA	50,000 sqm
QUAY	Fruit berth: 240 m (depth 10 m) Container berth: 470 m (depth 14 m) Ro-Ro berths: 200 m (depth 9 m)
HANDLING EQUIPMENT	2 STS gantry cranes (16 rows) 2 RMG stacking cranes (gap 46 m)
FRUIT STORAGE AREA	Total indoor area: 24,000 sqm Conditioned areas (+8°/+13° C) 3,500 plts Refrigerated rooms (-2°/+14° C) 10,000 plts
RAIL FACILITIES	4 x 460 m tracks
WAREHOUSE	Indoor area: 1.200 sqm Yard area: 5.000 sqm Handling equipment: 1 Reach Stacker 1 Heavy Forklift (25 tons) 3 E-forklifts Services provided: Stuffing/unstuffing in/out of gauge; warehousing; cross docking.



PORT OF SAVONA

TOTAL AREA	Indoor 22,000 sqm Outdoor 8,000 sqm
QUAY	Draft: 15.5m
PORT EQUIPMENT	Self-propelled cranes up to 300 t High-capacity buckets Hoppers and other specialised equipment
WAREHOUSE EQUIPMENT	Bagging lines for 500/600 kg big bags and 15-25-40-50 kg bags, with automatic palletiser and binding-machine, mechanical shovels and fork-lifts
OPERATING CAPACITY	Ship tonnage up to 50,000 GT Handling potential 400,000 t/year

BUT

BuT Terminal offers a wide selection of services in port operations including loading, unloading, transshipment, storage and handling of the full range of breakbulk commodities, namely, fertilisers, chemicals and minerals, soda ash, salt, sand, ferroalloys, wood pellets, biomass and related products, non-ferrous metal and colonial products. The terminal extends across a 22,000-sqm (indoor) and 8,000-sqm (outdoor) area in the Port of Savona, and the natural deepwaters, up to 15.5 m, and the direct fast connections with the motorway and rail networks, boost BuT's competitive edge in key catchment markets.

Traditional bulk handling services match well with specialised services, from 5 up to 50-kg bags and 500/600-kg big-bag packaging services, including automatic pallet wrapping. Overall the terminal offers a packaging capacity in excess of 1,000 tons daily over double shift.

In addition, the company operates under ISO 9001:2015 certification, in full compliance with ATEX directives and pending certification under the OHSAS 18001.



GRIMALDI GROUP SAVONA TERMINAL AUTO

Savona Terminal Auto, part of the Grimaldi Group, operates a Ro-Ro terminal, sited in the Darsena Alti Fondali, equipped to handle cars, machinery (self-propelled, wheeled and tracked), trailers, project and heavyweight cargo and trains.

The terminal is located alongside the quay and covers 110,000 sqm surface (40,000 sqm covered), with a handling capacity of 250,000 vehicles per year, bolstered by a storage capacity of 4,000 units, divided by lot and destination. The storage area is equipped with automated truck gates, surveillance cameras and direct rail-road connections and, in addition, offers bonded and fiscal warehousing services. The complete port operation cycle, from reception to loading/unloading operations, is integrated into an IT platform and performed by a team of in-house experienced skilled staff, ensuring high standards and minimum ship dwell times.

TOTAL AREA	120,000 sqm, 40,000 of covered areas
QUAY	Length: 350 m Depth: 15 m
STACKING AREA	Handling potential 250,000 vehicles/year Instant capacity 10,800 vehicles
RAIL FACILITIES	On-dock railway connection



SAVONA TERMINALS



Since February 2014, Savona Terminals SpA has merged with Must SpA, to rank as a major general cargo terminal operator in the heart of the Port of Savona, equipped to handle forest products, white bulk, iron and steel products (bulk and semi-products) as well as non-ferrous metals.

The terminal features three berths of 700 m overall length with a depth alongside between 9 and 15 m, 6 warehouses covering a total of 35,000 sqm (8,000 sqm dedicated to kaolin), an outdoor storage area of 30,000 sqm and 3 rail links. Since the end of 2016 the terminal has a new multipurpose warehouse with an indoor area of 3,800 sqm, an investment made possible by the extension of the public concession until 31 December 2034.

The terminal offers 4 Gottwald self-propelled cranes, 2 dedusted hoppers for powder-bulk cargo, conventional dedusted hoppers, tractors and fork-lifts, in addition to a range of handling equipment provided by the ports stevedoring company.

TOTAL AREA	Indoor 35,000 sqm Outdoor 35,000 sqm
QUAY	Zone 31 (length 162 m, depth 15 m) Zone 32 North (length 158 m, depth 15 m) Zone 14/15 (length 291 m, depth 10 m)
PORT EQUIPMENT	4 Gottwald self-propelled cranes 2 Mantsinen 2 Quay cranes for bulk and general cargo
WAREHOUSE EQUIPMENT	Fork-lifts, grippers, buckets, wheeled flatbeds, dedusted hopper for powder-bulk cargo
OPERATING CAPACITY	Ships up to 50,000 t DWT



PORT OF PRA'



PSA GENOVA PRA' TERMINAL

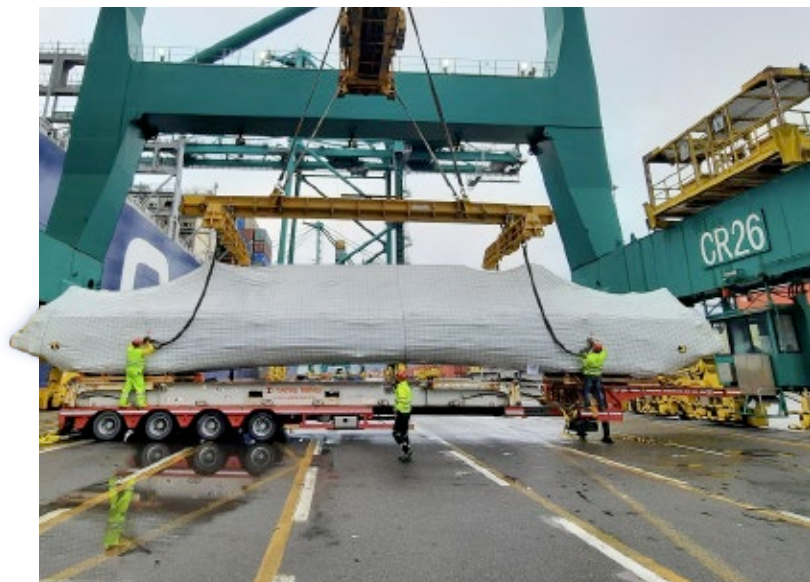
TERMINAL AREA	Total: 116 ha Warehouses: 5,000 sqm
QUAY	Length 1675 m Depth 15 m Berths 4 full-container vessels
HANDLING EQUIPMENT	12 Quay cranes: 8 (25 rows SSGCs) 4 (18 rows SSGCs) 31 RTGs (21 fully electric) 28 Reach-Stackers 6 Empty Container Handler 77 Prime movers 4 RMGs for rail operations
STACKING AREA	Ground slots: 15,000 TEU Reefer TEUs: 1,500 DG Cargo area: 1,408 TEU
RAIL FACILITIES	8 x 1,200 m tracks
WAREHOUSE	Indoor area: 1.200 sqm Yard area: 5.000 sqm Handling equipment: 1 Reach Stacker 1 Heavy Forklift (25 tons) 3 E-forklift

The PSA Genova Pra' terminal was designed specifically to handle large volumes of box traffic and to accommodate ultra-large container vessels: with modern and sustainable port facilities and direct on-terminal road and rail connections, PSA Genova Pra' terminal ranks as the leading maritime gateway to the Northern Italian industrial and consumer centers and as one of the most efficient gateway operators in North Mediterranean Sea.

Although the terminal is dedicated to containerhips, PSA GP also caters for breakbulk cargo which has increased significantly over the last few years. A committed team is specialized in finding tailor-made solutions for the full commodity sector: cases, yachts, helicopters, machine components are handled smoothly across the 62-t. capacity gantry cranes and a wide range of mobile cranes providing the highest degree of flexibility.

PSA Genova Pra' operates directly two rail services: the Southern Express, connecting the terminal 3/week with Basel in Switzerland.

In addition, PSA Genova Pra' offers the full range of logistic services: warehouses, cargo consolidation and deconsolidation of loads, warehouse inventory services - soon also abroad - special preparations for containers, heat treatments, weighing and sampling.



PORT OF GENOA



MESSINA GROUP

INTERMODAL MARINE TERMINAL (IMT)

TOTAL AREA	261,000 sqm + 54,000 sqm to be completed
QUAY	Length 1,350 m Depth 13 m Berths 5/6 (including 2 stern ramp berths)
HANDLING EQUIPMENT	4 STS cranes 2 RMG cranes 10 reach-stackers 18 forklifts 22 yard tractors 30 trailers 8 roll trailers 4 OOG spreaders
STACKING AREA	Capacity: 10,000 TEU Dangerous goods: 305 TEU Reefer plugs: 180 Refrigerated facility: 7,000 m ³ Internal depot: 11,000 sqm Car deck area: 6,524 sqm Rolling stock area: 31,000 sqm
RAIL TERMINAL	5 on-terminal rail tracks: 440 m each



Messina Group, founded in 1921, is by no means anchored in the past. The company's philosophy is to develop a fully intermodal operation with control over its own shipping services, handling facilities and onward intermodal transportation to ensure a reliable high quality service package.

The 261,000 sqm total surface area, at Genoa's Ponte Nino Ronco and Canepa, furnished the terminal with the equipment and infrastructure needed for rapid and efficient cargo handling, including warehousing and consolidation.

Today Intermodal Marine Terminal (IMT) is a truly multipurpose facility, fully equipped to cater for all key commodity segments: containers, general and rolling cargo, machinery, yachts and boats, and project cargo. The Ro-Ro sector continues to perform strongly and a wide selection of sailings are offered to major destinations in the Mediterranean, the Red Sea, North Africa, the Middle East, West Africa, South East Africa, and Indian Subcontinent.

The Messina group has recently applied a new strategy: IMT Terminal has opened up to the market, offering its extensive experience in the multipurpose shipping sector to all clients who request services tailor-made to their specific requirements.

IMT operates regular block train services across a network of inland terminals in Milan, Brescia, Vicenza and Dinazzano, plus Rivalta Scrivia by third parties, which all offer connections to major industrial and consumer centres across Central and Southern Europe.



TERMINAL SAN GIORGIO

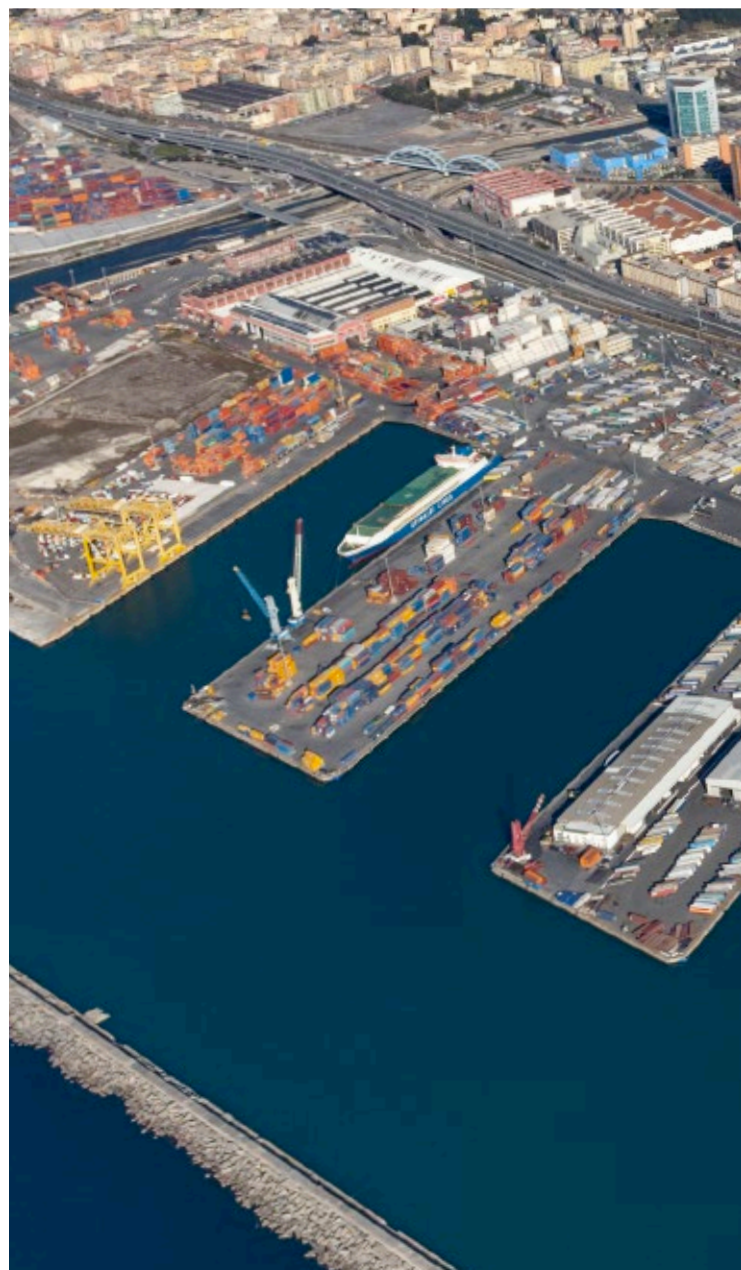
Terminal San Giorgio (TSG) is controlled by the Gavio Group (Autosped G SpA), leader in Italian industrial manufacturing, with core business in transportation, logistics and construction.

In Genoa TSG features total surface area of 206,000 sqm, and a 1600-metre quayline, with an annual average of 900 ship calls for a volume of over 2 million lane meters, confirming the recent steady upward trend. TSG is equipped to operate simultaneously 3 Ro-Ro vessels and 6 Lo-Lo vessels, and to handle the full range of product categories: containers, trailers, cars, yachts, breakbulk and project cargo.

With ongoing terminal infrastructure investment and a focus on technological innovation and environmental sustainability, the port facilities are on track in reaching the milestones of the ecological transition process undertaken. TSG deploys in total 5 mobile harbour cranes, with hybrid engine and electric smart powerful technology, for fast and efficient handling of all general cargo commodity sectors.

Bolstered by the digitization and automation of the new terminal gate (fully powered by solar panels), TSG ranks as a genuine “smart terminal” in the Port of Genoa. In addition, TSG has obtained ISO45001, ISO14001 and AEO certifications in environmental and quality management, thereby consolidating its role as a reliable trading partner for the major carriers calling at the port.

LOCATION	Ponte Libia - Ponte Somalia
TOTAL AREA	206,000 sqm
QUAY	Length: 1,600m Depth: 11-12m Berths: 6 Lo-Lo + 3 Ro-Ro
HANDLING EQUIPMENT	3 Gottwald mobile crane 150 t. with twin lift 1 Fantuzzi mobile crane 120 t. with twin lift 1 Fantuzzi mobile crane 100 t. with twin lift Full Reach stackers: 10 Forklifts: 25 Tugmasters: 17 Mafi rolltrailers: 90 Reefer plugs: 100
RAIL TERMINAL	2 Rail lines for 2 freight trains



FO.RE.S.T



Fo.re.s.t. Terminal at Ponte Somalia is the only dedicated forest products facility in the Port of Genoa, handling pulp for paper production, kraft liner board, reels, newsprint and timber.

The company, established in 1992, is owned by the Campostano Group and ranks as one of the leading forest products handling companies in the North Tyrrhenian Sea.

The terminal covers a total area of 15,500 sqm (7,500 sqm are covered), with 10-metre depth alongside a 193- metre quay. The company has ISO 9001/2008 and OHSAS 18001 certification.

The full range of services provided includes cargo surveying, inland distribution, consulting, shipping agency, forwarding and insurance brokerage.

In addition, the terminal is equipped to handle iron, steel and yachts, and to provide container stripping services.

LOCATION	Ponte Somalia Ponente
TOTAL AREA	15,500 sqm 7,500 sqm covered
QUAY	Length: 193 m Depth: 10 m
HANDLING EQUIPMENT	10 Forklift trucks 1 Gottwald 280E crane 1 Sweeper 1 Reach stacker



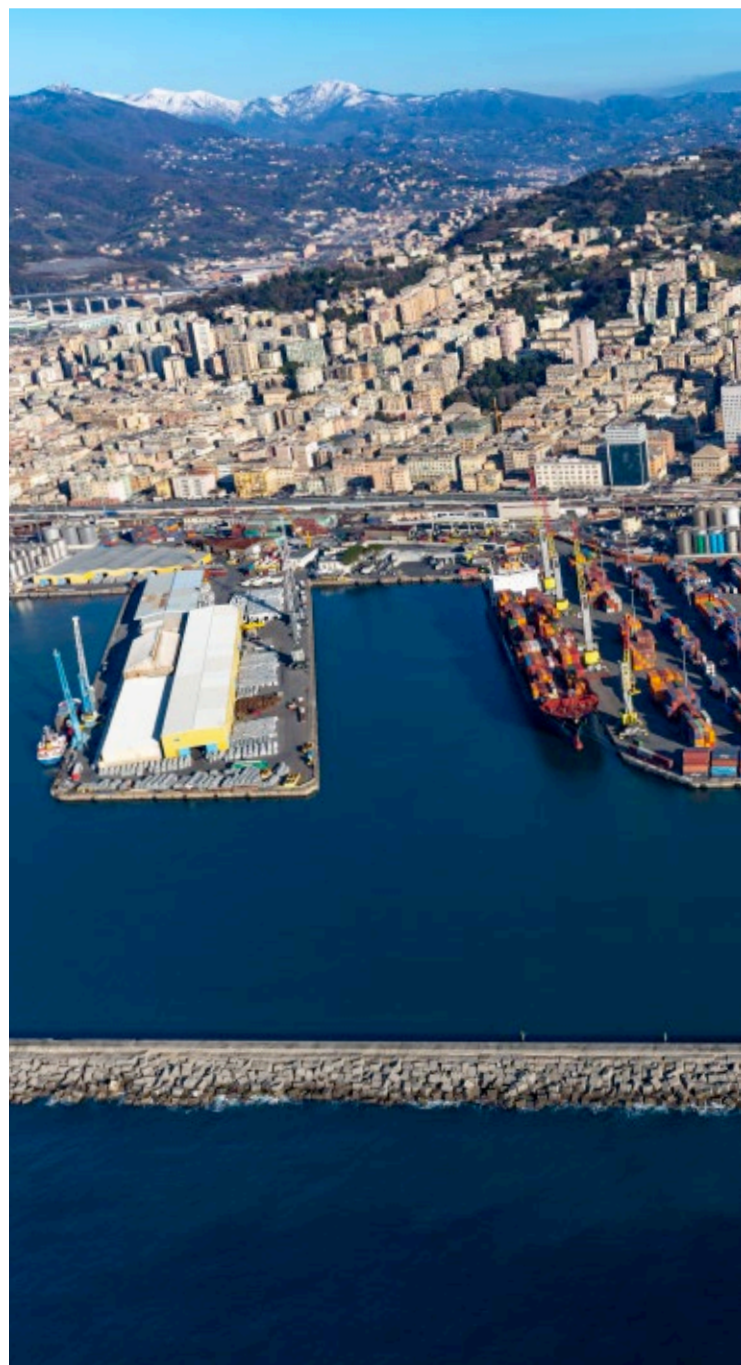
SPINELLI GROUP - GENOA PORT TERMINAL

The Spinelli Group established its port terminal management activities in Genoa in the late 1990s, and since 2001 Genoa Port Terminal has been managed by the Spinelli Group.

Genoa Port Terminal, covering a total surface area of 189,000 sqm at Calata Inglese, Calata Massaua, Ponte Etiopia and Ponte Idroscalo has over the years progressively boosted container and trailer throughput and number of calls, thereby winning the confidence of major shipping lines. The terminal currently handles approximately 450,000 TEUs across the Med, Africa, North and South America, and over 650,000 lane metres of rolling cargo annually to/from Tunisia with Cotunav.

The substantial investment programme implemented in recent years has further strengthened the position of the company as centre of cargo handling excellence. Today Genoa Port Terminal is equipped to provide clients with the full range of services, including stevedoring, storage, container stuffing and stripping, weighing and lashing of project cargo. Reefer container handling facilities feature 290 reefer plugs. In addition, the completion of the new on-terminal rail link has further boosted intermodal services, cutting transit times and increasing efficiency.

LOCATION	Ponte Etiopia - Ponte Idroscalo, Calata Inglese - Calata Massaua
TOTAL AREA	189,000 sqm
QUAY	Length: 1,330 m Depth: 14 m Berth: 4 (With 3 Ro-Ro ramps)
HANDLING EQUIPMENT	5 x 150 t. Mobile cranes 3 x 120 t. Mobile crane 2 x 100 t. Mobile crane 28 Reach stackers 23 Mafi tractors 290 Reefer plugs
RAIL TERMINAL	2 x 400 m Rail link



C. STEINWEG - GMT



C. Steinweg-GMT S.r.l. is located in Genoa as Regional Office of the Rotterdam-based Steinweg Group for Central Med, Adriatic Coast and North Africa. The company is the leading metal logistics operator in Italy, and GMT has been a member since 1992. Specialised in forwarding, warehousing, transport and distribution of the full range of commodities, the company's core business focuses on non-ferrous metals, ferro-alloys, scrap and steel.

The company warehouses in Genoa, Trieste and Livorno are licensed by the LME, and by ICE for coffee in Genoa and Trieste. C. Steinweg-GMT also operates in the Ports of Salerno, Ravenna and Gaeta and branch offices in the Ports of Koper, Rijeka, Bar, Belgrade, Thessaloniki, Casablanca, Alexandria and agents in Ploce, Split and Durres.

The company provides clients with worldwide access to a premier door-to-door service integrated across a network of Steinweg offices in 110 locations in over 40 countries.

LOCATION	Ponte Eritrea Calata Mogadiscio CSM
TOTAL AREA	100,000 sqm of which: 30,000. of covered areas
QUAY	Length: 925 m, one with ramp for Ro-Ro vessels Depth: 11 m
HANDLING EQUIPMENT	4 cranes 5 reach stackers 40 forklifts 20 semi-trailers 4 spreaders 2 pivoting coils
STACKING AREA	Warehouse: 60,000 sqm
RAIL FACILITIES	500-metre rail link



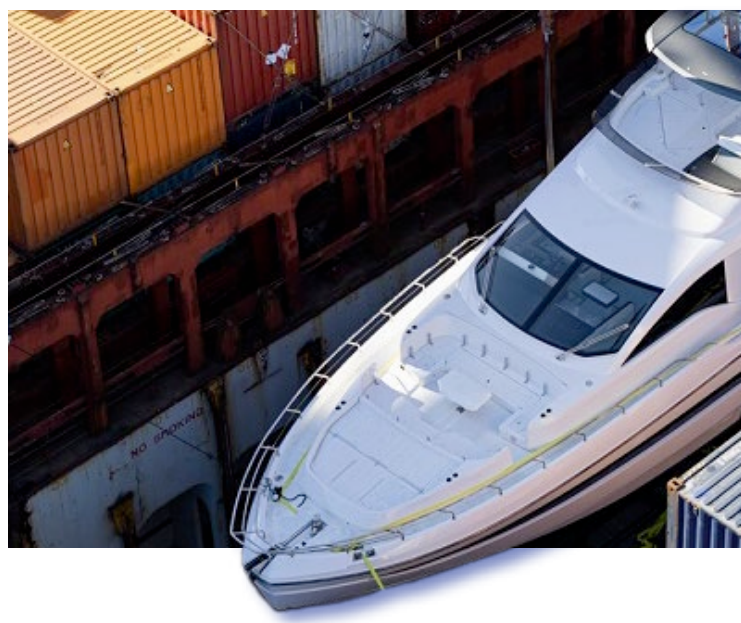
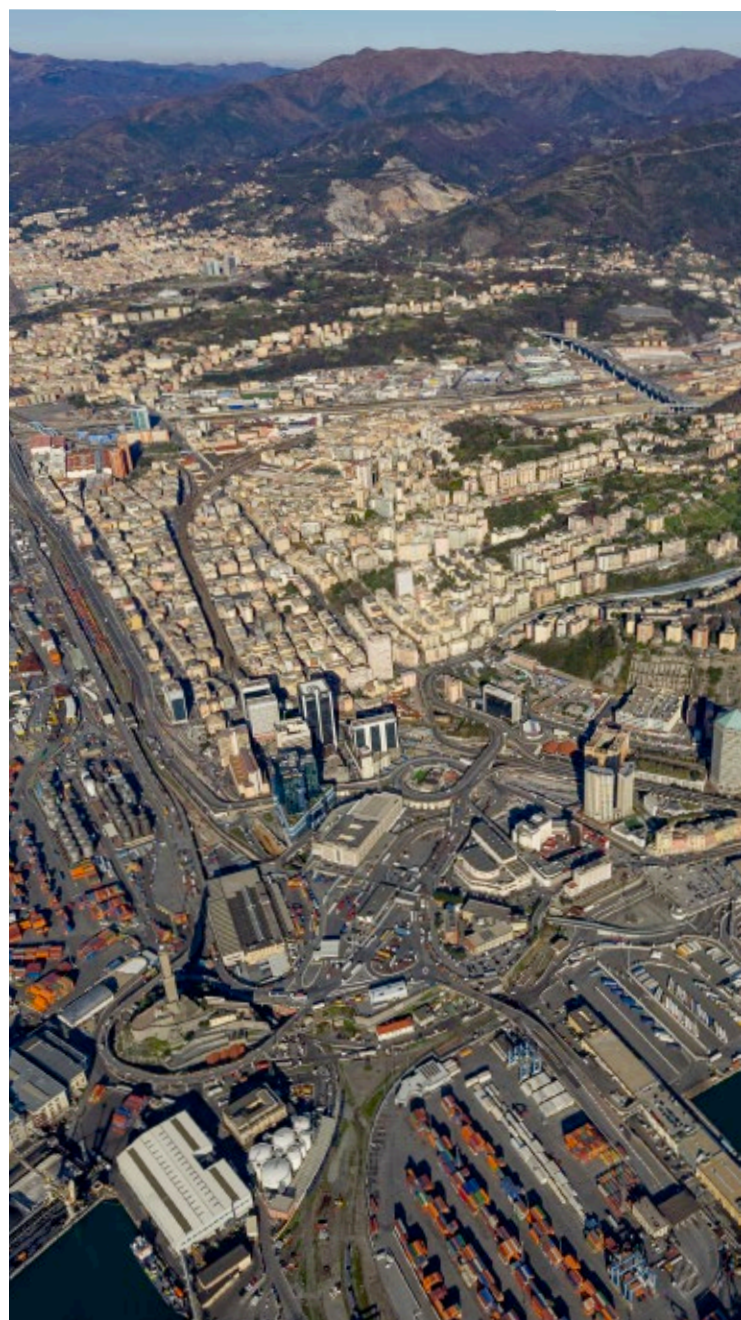
PSA SECH TERMINAL CONTENITORI PORTO DI GENOVA

PSA SECH (Terminal Contenitori Porto di Genova S.p.A.) is located in the heart of the Port of Genoa basin and is equipped to cater for up to 14,000 TEU vessels, consolidating its position as a centre of cargo handling excellence with onward distribution towards the major Northern Italian logistic hubs. The terminal facilities cover a total surface area of 205,000 sqm and feature a 526-m quay, with 15-m depth alongside, and a range of handling equipment, including ship-to-shore gantry cranes with an outreach of 20 rows.

Ranking amongst Italy's leading gateway container terminals, PSA SECH has successfully capitalised upon its strategic location, easily accessible both by sea (vessels dock in less than one hour after having entered the port), and overland with direct connections to the rail and motorway network (500 m from the motorway exit).

PSA SECH is equipped to cater for breakbulk cargo weighing up to 60 tons. An external floating crane is available on demand, so that the terminal can increase its safe workload up to 100 tons, making the operations fast and efficient. Bespoke solutions are provided to the client in order to satisfy any cargo handling needs in size and shape, arranging loading and unloading operations both directly and after grounding at the terminal.

TERMINAL AREA	205,000 sqm
QUAY	Length 526 m Depth 15 m Berths 2 full-container vessels
HANDLING EQUIPMENT	5 quay cranes: 4 (20 rows SSGCs) 1 (18 rows SSGCs) 6 RMGs 17 Reach-stackers 22 Prime movers 2 RMGs for rail operations (2024)
STACKING AREA	Reefer TEUs: 658 DG Cargo area: 549 TEU
RAIL FACILITIES	2 x 600 m tracks



STAZIONI MARITTIME S.P.A.



Stazioni Marittime S.p.A. operates the ro-pax ferry terminal in the Port of Genoa, handling on average 2,5 million passengers, 700,000 vehicles. The port offers a wide selection of ferry services across the Mediterranean and to North Africa: destinations include Sardinia, Sicily, Corsica, Spain, Malta, Morocco, Tunisia and Algeria with sailings operated by Grandi Navi Veloci, CIN Tirrenia Compagnia Italiana di Navigazione, Moby Lines, Co.Tu. Nav, and Algérie Ferries.

The company manages three dedicated ferry terminals and a total of 8 all-purpose Ro-Ro berths plus an additional 2 berths (Ponte Andrea Doria Levante and Ponte Andrea Doria Ponente) which can accommodate both cruise and ferry ships.

Calata Chiappella ferry terminal boasts 19 check-in gates that speed up transit times to the embarkation areas. The ferry terminal building is linked to Ponte Colombo and Ponte Caracciolo by a walkway which separates the pedestrian flows from the cars and trucks at quay level. An 80,000-sqm area dedicated to pre-boarding parking and a separate 100,000 sqm truck park are available.

Ponte Colombo ferry terminal offers 3 berths across an area of 6,000 sqm. The terminal is equipped to handle the latest generation of ships which sail to both European and North African destinations.

Ponte Caracciolo ferry terminal was designed to cater specifically for border control and security requirements of extra-Schengen ferry traffic.



TOTAL AREA	290,000 sqm
FACILITIES	5 terminals
QUAY	Length: 3,000 m Depth: 10,5 m max
MAX. SHIP DIMENSIONS FOR BERTH	Length: no limit Width: no limit
ANCHORAGE	Available: yes Ship tenders allowed: yes Tugs available yes Tidal movement/range: 30 cm

PORT DIRECTORY

Terminal Operators

BETTOLO - GENOA MEDITERRANEAN GATEWAY TERMINAL

Calata Giovanni Bettolo
16149 Genova, Italy
Tel. +39 010 817 4990
www.bettolo.com
info@terminalbettolo.com

BUT

Via Chiodo, 1/3 - 17100 Savona - Italy
Tel. +39 019 821644
www.but.sv.it
but@but.sv.i

C. STEINWEG - GMT

Via Scarsellini, 119 Torre B - 16149 Genova - Italy
Tel. +39 010 4697611
www.italy.steinweg.com
genoa@it.steinweg.com

FO.RE.S.T.

Ponte Somalia Ponente - 16149 Genova - Italy
Tel. +39 010 659851
www.campostano.com
forest@campostano.com

FORSHIP

Calata Nord Porto Vado - 17047 Vado Ligure (SV), Italy
Tel. +39 019 215 6206
www.forship.it
operativo.porti@corsicaferries.com

MESSINA GROUP

IMT - INTERMODAL MARINE TERMINAL

Via Lungomare Canepa - Ponte Nino Ronco
16149 Genova, Italy
Tel. +39 010 6039419
www.imterminal.it
commercial@imterminal.it
info@imterminal.it

PSA GENOVA-PRA' TERMINAL

Bacino Portuale di Pra' - 16157 Genova, Italy
Tel. +39 010 69961
www.psaitaly.com | www.psagp.it
psagp-marketing@globalpsa.com

PSA SECH TERMINAL CONTENITORI PORTO DI GENOVA

Calata Sanità - Palazzina Uffici
16126 Genova Porto, Italy
Tel. +39 010 64831
www.psaitaly.com | www.psasech.it
psagp-marketing@globalpsa.com

REEFER TERMINAL

Banchina Raffaello Orsero - Porto Vado
17028 Bergeggi (SV), Italy
Tel. +39 019 28911
www.vadogateway.com
vado_marketing@apmterminals.com

SAVONA TERMINAL AUTO - GRIMALDI GROUP

Piazza De André, 6 - 17100 Savona, Italy
Tel. +39 019 821375
www.marittimaspedizioni.it
commercial@marittimaspedizioni.it

SAVONA TERMINALS

Piazza Rebagliati, 1/6 - 17100 Savona - Italy
Tel. +39 019 800899
www.campostano.com
savona.terminals@campostano.com

SPINELLI GROUP

GENOA PORT TERMINAL

Calata Ignazio Inglese - Palazzina Uffici
16149 Genova, Italy
Tel. +390106570730
www.gruppospinelli.com
info@gpt.gruppospinelli.com

STAZIONI MARITTIME S.p.A.

Ponte dei Mille - 16126 Genova, Italy
Tel. +39 010 0898335
www.stazionimarittimegenova.com
mail@smge.it

TERMINAL SAN GIORGIO

Palazzina Ponte Libia - 16149 Genova Porto, Italy
Tel. +39 0100894102
www.terminalsangiorgio.it
commerciale@terminalsangiorgio.it

VADO GATEWAY

Via Aurelia 75B
17047 Vado Ligure (SV) Italy
Tel. +39 019 28911
www.vadogateway.com
vado_marketing@apmterminals.com

PORT DIRECTORY

Industry Associations

GENOA FREIGHT FORWARDERS ASSOCIATION

Via Roma 9/4 - 16121 Genova, Italy
Tel. +39 010 5451986
www.spediporto.genova.it
info@spediporto.genova.it

GENOA SHIPPING AGENTS ASSOCIATION

Piazza Dante, 6 - 16121 Genova, Italy
Tel. +39 010 5536696
www.assagenti.it
info@assagenti.it

GENOA TERMINAL OPERATORS ASSOCIATION

c/o Genoa Confederation of Italian Industry
Via S. Vincenzo, 2 - 16121 Genova, Italy
Tel. +39 010 83381
www.confindustria.ge.it
info@confindustria.ge.it

LIGURIA CUSTOMS AGENTS ASSOCIATION

Piazza Montano 3/15 - 16151 - Genova, Italy
Tel +39 010 412069
ctsd.ge@alboge.it

PORT OF SAVONA VADO STAKEHOLDERS ASSOCIATION

Via Gramsci 10 - 17100 Savona, Italy
Tel. +39 019 85531
www.utentiporto.sv.it
segreteria@utentiporto.sv.it

SAVONA VADO SHIPPING AGENTS AND FREIGHT FORWARDERS ASSOCIATION

Via degli Orefici - 17100 Savona, Italy
Tel +39 019 8484518
www.isomar.it
segreteria@isomar.it

SAVONA VADO TERMINAL OPERATORS

c/o Savona Confederation of Italian Industry
Via Gramsci 10 - 17100 Savona, Italy
Tel. +39 019 85531
www.uisv.it
ui@uisv.it

