

The Italian Riviera Cruise Destination

Ports of Genoa @
Seatrade Cruise Global Miami 2025

Miami Beach Convention Center
Exhibit Hall - Booth 1806

 **PORTS of
GENOA**
VADO LIGURE • SAVONA • PRA • GENOVA

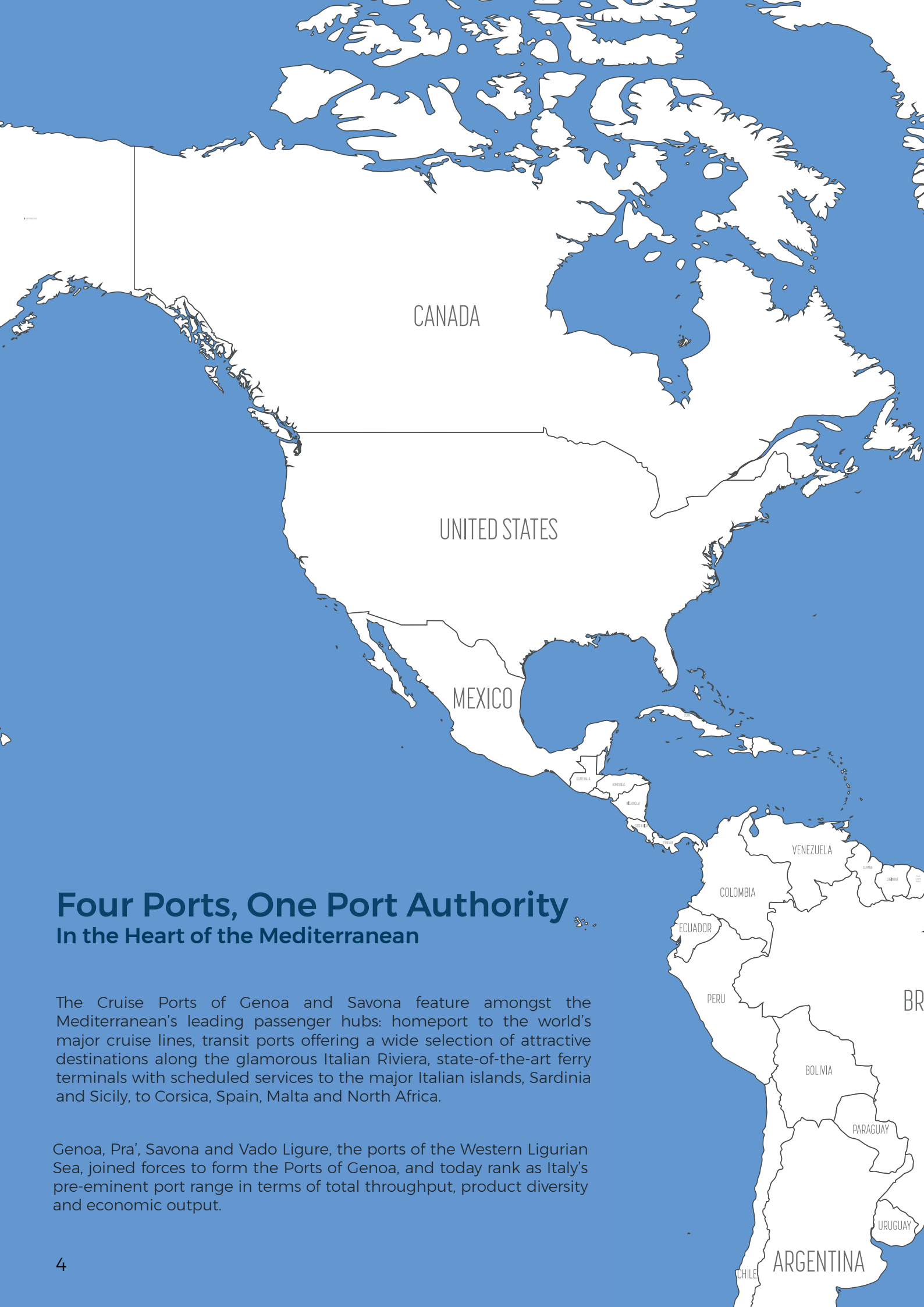


CONTENTS

1	Four Ports, One Port Authority In the Heart of the Mediterranean	4
2	The Port of Genoa Genoa Cruise Port Stazioni Marittime Genova	6 7
3	The Port of Savona Savona Cruise Port Palacrociera	8 9
4	Setting Sail Towards Clean Energy On-shore Power Supply	10
5	Shore Excursions: Discovering the Italian Riviera Genoa La Superba: The Waterfront Step Back in Time Gastronomic Genoa From the Seaside to the Hills Get out of Town Savona: City of Popes Savona's Chinotto: a Ligurian Delicacy Riviera delle Palme Promoting Tourism and Local Territory	12 13 14 15 16 17 18 19 20
6	Easy to Reach Genova City Airport	21



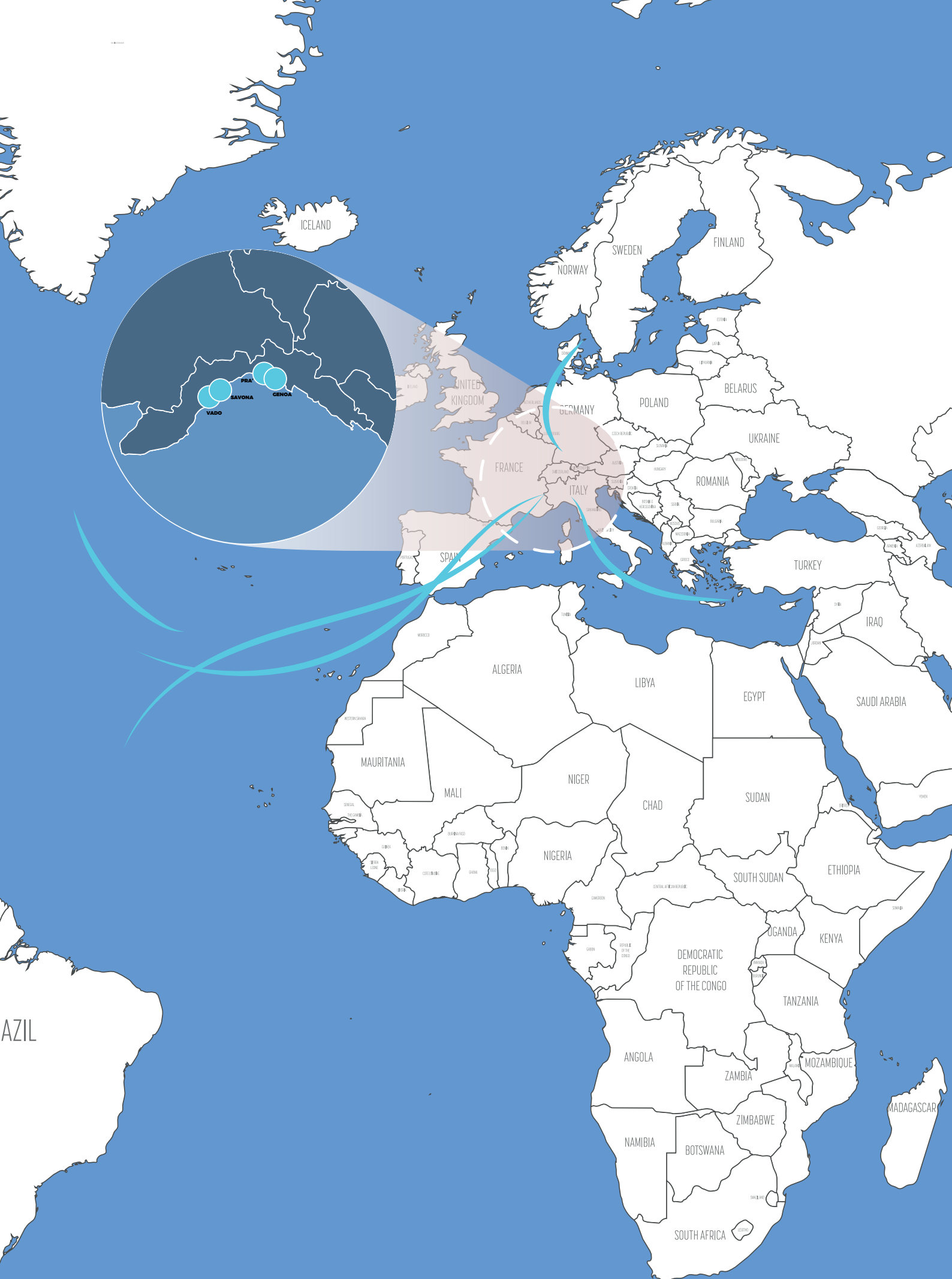




Four Ports, One Port Authority In the Heart of the Mediterranean

The Cruise Ports of Genoa and Savona feature amongst the Mediterranean's leading passenger hubs: homeport to the world's major cruise lines, transit ports offering a wide selection of attractive destinations along the glamorous Italian Riviera, state-of-the-art ferry terminals with scheduled services to the major Italian islands, Sardinia and Sicily, to Corsica, Spain, Malta and North Africa.

Genoa, Pra', Savona and Vado Ligure, the ports of the Western Ligurian Sea, joined forces to form the Ports of Genoa, and today rank as Italy's pre-eminent port range in terms of total throughput, product diversity and economic output.



ICELAND

NORWAY

SWEDEN

FINLAND

UNITED KINGDOM

GERMANY

POLAND

BELARUS

UKRAINE

FRANCE

ITALY

ROMANIA

TURKEY

SPAIN

IRAQ

ALGERIA

LIBYA

EGYPT

SAUDI ARABIA

MAURITANIA

MALI

NIGER

CHAD

SUDAN

SENEGAL

THE GAMBIA

SIERRA LEONE

LIBERIA

IVORY COAST

GHANA

TOGO

BENIN

NIGERIA

CHAD

DEMOCRATIC REPUBLIC OF THE CONGO

SOUTH SUDAN

ETHIOPIA

UGANDA

KENYA

TANZANIA

ANGOLA

ZAMBIA

MOZAMBIQUE

NAMIBIA

BOTSWANA

ZIMBABWE

SOUTH AFRICA

MADAGASCAR

BRAZIL

Genoa Cruise Port

Stazioni Marittime Genova operates five passenger terminals: two purpose-built facilities at Ponte dei Mille and Ponte Andrea Doria are dedicated to cruise traffic, whilst three terminals at Calata Chiappella, Ponte Caracciolo and Ponte Colombo, are primarily used for ferry traffic.

Access to the terminals is easy as the passenger port is located just 6 km from **Genova City Airport** and 200 m from Genoa's **Piazza Principe International Railway Station**.



MSC Cruises, the world's fastest growing cruise line, has chosen to focus on Genoa.

The company homeports at its facilities, sailing to major destinations in the Mediterranean.

In 2024 Genoa registered **304 calls** and a total of **1.5 million** cruise passengers.

The Port Authority has recently completed quay retrofit and dredging activities alongside the quaylines in compliance with the technical requirements of the latest ultra-large cruise vessels: the depth at Ponte dei Mille Cruise Terminal has been increased to -11 metres.

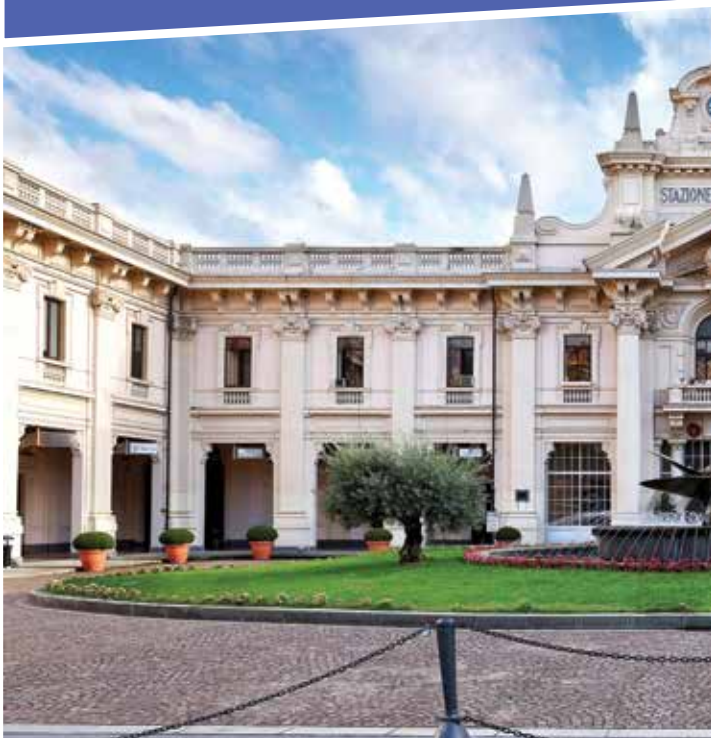
In fact, the MSC flagship LNG-powered World Europa homeports in Genoa: 333 metres, in length, 22 decks, 205,700 gt and 6,762 passengers.

Works are underway for new quay development along Ponte dei Mille East, to be extended from **290 m** to **376 m**, to cater in full safety for the latest generation of ultra-large cruise ships, a **24-million euro investment** scheduled for completion by the end of 2026.

Stazioni Marittime Genova

Ponte dei Mille

The monumental 1930s refurbished building, covering 16,000 sqm, can accommodate two large cruise vessels and up to 10,000 passengers a day. Ponte dei Mille Terminal features a 340 m-quay capable of handling the latest generation of post-Panamax cruise ships, and an additional berth 290 metres in length. Construction works are underway to extend the quay to 376 m. The facility is equipped with the full range of services to guarantee maximum safety and comfort.



Ponte Andrea Doria

The art deco terminal building covers a total surface area of approximately 11,000 sqm on two floors and features a berth of 298 m and a berth 283 m in length (Ponte Doria East), equipped with mobile boarding bridges, which can host the last generation of cruise ships and accommodate 8,000 passengers per day. Maximum comfort is offered in the ample departure halls which house an extensive array of passenger amenities.

AREA: 290,000 sqm

FACILITIES: 5 passenger terminals

BERTHS: 12

TOTAL LENGTH OF QUAYS: 3,000 m

MAX DEPTH: 11 m

MAX. SHIP DIMENSION FOR BERTH

length: no limit

width: no limit

ANCHORAGE

available: yes

ship tenders allowed: yes

tugs available: yes

tidal movement/range: 30 cm

SHIP AND PASSENGER SERVICES

Pilotage, berthing, tugs, ship repairs, bunkering, solid/liquid/special waste collection and disposal, water supply, ship provisions, banks, carparks, shops, duty free

TRANSPORTATION

Boat services to historic centre and shoreside excursions to the Riviera

City centre: 1 km

Railway Station: 200 m

Genova City Airport: 6 km

SAFETY

Stazioni Marittime implements and maintains a Health & Safety System in compliance with ISO 45001 requirements

SECURITY

International Code for the Security of Ships and Port Facilities (ISPS) of the IMO N° 725/2004 EU Regulation on Ship and Port Facility Security

Savona Cruise Port

Located near the International Airports of Genoa, Milan and Nice, Savona sits strategically in the heart of the Italian Riviera and is homeport to **Costa Cruises** for itineraries across the West Mediterranean.

Since its inauguration in 2003, Savona's **Palacrociere Terminal** has been operated directly by Costa Cruises, today part of Carnival Corporation, the world's leading cruise line.



Major infrastructure works have been completed in 2019 for a total investment of **24 million euros**, including dredging alongside the Palacrociere main cruise terminal from -9 m asl to -11 m asl, following a retrofit of the quay.

The Palacrociere is also homeport to the new LNG-powered Costa Toscana flagship.

In 2024 the Port of Savona registered **133 calls** and a total of **753,000 cruise passengers**.

Palacrociere

Costa Cruises operates Palacrociere. The Savona Cruise Terminal consists of two dedicated quays, 450 m and 325 m in length, with a depth alongside of 11 m and two maritime stations connected by a pedestrian walkway.



Savona, thanks to its state-of-the-art passenger facilities, ranks amongst the Mediterranean's top cruise ports.

Palacrociere Cruise Terminal is firmly committed to upgrading its quality management systems and operates in full compliance with certified ISO 9001 requirements.

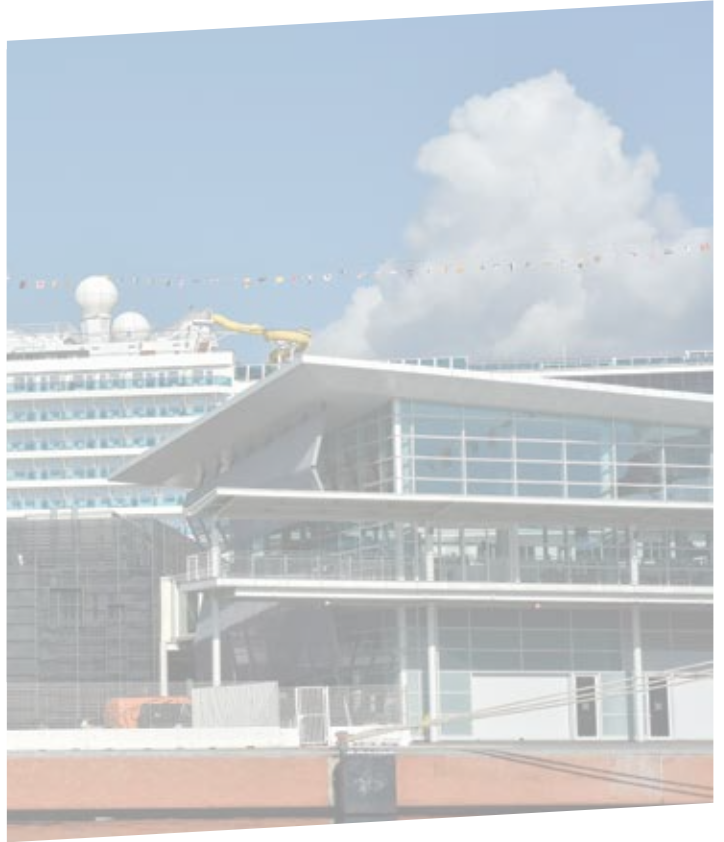
In addition, the terminal operating company integrates all environmental protection practices into its management system, preventing pollution, reducing waste and energy consumption, in compliance with strict ISO 4001 standards.

PALACROCIERE TERMINAL 1

Terminal 1 29,000 sqm
Indoor area 8,000 sqm
External area 2,700 sqm
3 levels; 8 escalators; 4 lifts; 15 check-in desks;
1,400 seats; 2 passenger boarding bridges

PALACROCIERE TERMINAL 2

Terminal 2 17,500 sqm
Indoor area 3,000 sqm
Outdoor area 1,000 sqm
2 levels; 2 escalators; 2 panoramic elevators;
8 check-in desks; 500 seats;
1 passenger boarding bridge



QUAYS

Calata delle Vele quay
"Don Genta" quay
Occasional use of public berths

SERVICES

Covered bus & coach parking area, parking areas for buses and cars, bar/restaurant with panoramic terrace, VIP lounge, children's club, conference centre, crew room

SECURITY

Terminals area completely fenced and monitored
Luggage control areas with X-ray systems

On-shore Power Supply **Setting Sail Towards Clean Energy**

In a significant stride toward environmental sustainability, the Western Ligurian Sea Port Authority has embarked on an ambitious mission: to provide onshore power to cruise and ferry ships calling at the Ports of Genoa and Savona-Vado Ligure.



This strategic move aims to accelerate the transition to clean energy across these vibrant maritime hubs.

The Ligurian ports are nestled right in the heart of the city centres. By enabling vessels to switch off their generators and connect to the electrical power grid while docked, the provision of onshore power promises an immediate reduction in carbon emissions and noise pollution. It's a win-win for both the environment and the communities that rely on these ports.

To date, works have commenced across Genoa's cruise and ferry hub. The project's first phase calls for the installation of a new power generation unit capable of providing **20 megawatt-hours (MWh)**, enough to serve simultaneously up to three cruise ships. Subsequently, the second phase will boost the energy supply to **42 MWh**, catering for the adjacent ferry terminals.

Genoa's Shipyard Refitting Area and PSA Genova Pra' container terminal already benefit from onshore power supply. The completion of construction works at the passenger hub, scheduled for 2026, will propel the Ports of Genoa into the league of top sustainable ports.

To address the pressing issues of overall port sustainability, in Savona plans are afoot to connect the **Palacrociere Cruise Terminal** to a **shoreside electric power converter system** capable of providing **10 MWh**, enough to serve one cruise ship at a time.

Prime objective in the Port of Savona is to develop Italy's first port sustainable energy hub, powered by solar panels and smart grid networks for the storage and distribution of the renewable energy produced.



Genoa La Superba: The Waterfront

The Cruise Terminals of Genoa are located in the heart of the Old Port, a blend of modernity with the elements from the different periods of the city's fascinating maritime past. The Waterfront was the focus of a highly successful ambitious redevelopment scheme on the part of Genoa's Renzo Piano, one of the most influential architects in the world.



Europe's leading state-of-the-art Aquarium, situated along the waterfront, is Genoa's top attraction.

Its display tanks stretch out into the harbour: dolphins, sharks, piranhas, penguins, seals are amongst the over **400 species** which can be viewed close up, underwater or from walkways above the tanks.



Nearby is the Galata Maritime Museum, celebrating Genoa's prodigious seafaring past. There are also superb views of Genoa from Renzo Piano's Il Bigo structure. Children can learn about science and technology and have fun at the Città dei Bambini e Ragazzi Experience Museum, featuring over 90 interactive and multimedia exhibits.

Step Back in Time

Genoa's past, as one of the Mediterranean's leading maritime powers and as cradle of the modern banking system, is reflected in the wealth of sumptuous marble landmarks which characterize the vast pedestrianised old town. The *caruggi* and piazzas are a living treasure trove of the past.



San Lorenzo Cathedral

Highlights include *Palazzo Ducale* which hosts acclaimed international photographic and art retrospectives, concerts and cultural events; the *Romanesque Cathedral of San Lorenzo* with its distinctive black slate and white marble facade; *Palazzo del Principe* with artwork by Old Masters. Much of the former Republic of Genoa's mercantile wealth had been invested in churches decoration. For instance the *Church of Gesù*, with outstanding works of art by Rubens, or the Church and Cloister of San Matteo.



Palazzo Rosso

UNESCO WORLD HERITAGE SITE

A staggering **42** of the more than 100 Palazzi enlisted as *dei Rolli*, and located in Genoa's historic centre have been designated **UNESCO World Heritage Sites**.

Gastronomic Genoa

Genoa has a population that cares deeply about food: restaurants, trattorias, cafés and food stalls abound throughout the city and offer a vast selection of culinary delights.



Genoa is naturally the birthplace of the celebrated *pesto*, with fresh basil grown locally.

Focaccia is a staple here and delicious *col formaggio* (with cheese).

Farinata, a tasty chickpea pancake, is another local speciality. Fish, freshly caught, is turned into gastronomic masterpieces like *fritto misto* – deep-fried mixed seafood – and *stoccafisso accomodato* – stockfish with potatoes and taggiasche olives. Whilst anchovies are considered daily fare.

The artichokes from nearby Albenga are practically worshipped and used to make *torta pasqualina*.



The *caruggi* of the old town, strewn with niches and shrines, hand-carved ornamental panels over doorways and marble reliefs, are lined with listed independent Old World Shops, the *Botteghe Storiche*, inviting places in which to stop. Here visitors can indulge in exquisite pastries, handmade chocolates, candied chestnuts, marzipan fruits, herbs and spices, or distinguished silk ties with hand-embroidered initials, tailor-made men's shirts, antique books and maps, natural herbal and botanical products... Genoa is certainly an enchanting destination!

From the Seaside to the Hills

Stretching along a 30-km coastline, Genoa offers great beaches within easy reach of the cruise port.



Boccadasse fishing village

A leisurely walk along **Corso Italia** leads to pretty **Boccadasse**, a small sheltered **fishing village** where you can sample the perfect ice cream, made entirely from natural ingredients, and indulge in sublime aperitivi in the numerous bars overlooking the sea. Whilst **Nervi**, on the eastern side of Genoa, between the hills and the sea, where grand villas and lush gardens once owned by Italian nobles now provide stunning backdrops to art displays and events, offers the terrific opportunity for a stroll along the **dramatic 2-km Anita Garibaldi Promenade** which runs along the cliffside.



View of the Casella railway with the oldest working electric locomotive in Italy

INLAND ITINERARIES

The hills which encompass Genoa are dotted with a myriad of perfectly preserved hamlets and villages where visitors can savour a taste of history, tradition, handmade crafts and gastronomic delights. One of the most pleasant ways to travel inland from Genoa is by the **Casella Railway, on a narrow gauge train in refurbished carriages dating from 1929**, which offers breathtaking views as it cuts its way into the heart of the Apennines.

Get out of Town

A bus-ride or boat trip from the Cruise Terminal along a spectacular rugged coastline and in 40 minutes the top exclusive resorts of **Portofino**, **Santa Margherita** and **Camogli** of the renowned Italian Riviera can be viewed against a backdrop of lush Mediterranean vegetation.



Camogli fishing village

Camogli, a charming sun-drenched fishing village, is characterised by lofty yellow and orange houses along the tiny harbour where the pine-green cliffs plunge into the turquoise sea.

The myriad of coffee shops and bars which line the passeggiata are a great place from which to enjoy the fine views over *Golfo Paradiso* and *Monte Portofino*. Boats link Camogli to the adjacent 12-th century Abbey of San Fruttuoso di Capodimonte, nestled in a tiny hamlet in a picturesque bay.



Portofino

From Camogli one of the most scenic routes in Italy leads to *Santa Margherita Ligure*, the elegant coastal town where the waterfront bars and cafés fill up with young vacationers in the summer, whilst the resort simultaneously preserves the charm of the brightly coloured houses that recall its fishing village past. Here designer shopping is a must as the town abounds with boutiques.

Finally, the headland and little bay of *Portofino*, whose tall, narrow pastel-coloured houses frame the harbour, is one of the most famous views in Italy.

The *piazzetta* bustles with boutiques, bars and trattorias overlooking the harbour against the backdrop of the porticoes.

Savona: City of Popes

Savona combines the charm of the medieval centre with the new modernity of the buildings of the port area, designed by international architects.

In 2025, Savona featured amongst the nominees of the prestigious final shortlist for the 2027 designation of Italian Capital of Culture; an initiative promoted by the Ministry of Culture which puts culture at the heart of Italian cities, with the aim of fostering the power of culture in social cohesion, creativity and innovation and the contribution of culture to the development of cities and to collective well-being.



Medieval Clocktower, Leon Pancaldo

Cruise ships arriving in Savona are greeted by the **Medieval Clocktower of Leon Pancaldo**. Once disembarked, passengers can easily reach the old town across the pedestrian bridge in the marina and stroll along the fascinating alleys of the medieval centre.

Tourists can pay a visit to the **Cathedral with Julius II's** wooden intarsia choir seats and the Sistine Chapel, commissioned by Pope Sixtus IV. **Our Lady of the Castle's Oratory**, with the monumental polyptych by V. Foppa and L. Brea, and the Town Gallery with artwork commissioned by the Della Rovere family, are certainly worth a visit.



Savona Old Town, Priamar Fortress

Nearby, the **Priamar Fortress dating from 1542**, dominates the marina and old town. Pre-Roman, Roman and Byzantine ruins on site, today Priamar houses **Savona's Archaeological Museum**.

Art lovers can enjoy a visit to The **Museum of Palazzo Gavotti**, which hosts **The Municipal Art Gallery**, an exciting blend of ancient, modern and contemporary art, and the **Savona Ceramics Museum**, a marvellous voyage across different eras and styles.

Savona's Chinotto: a Ligurian Delicacy

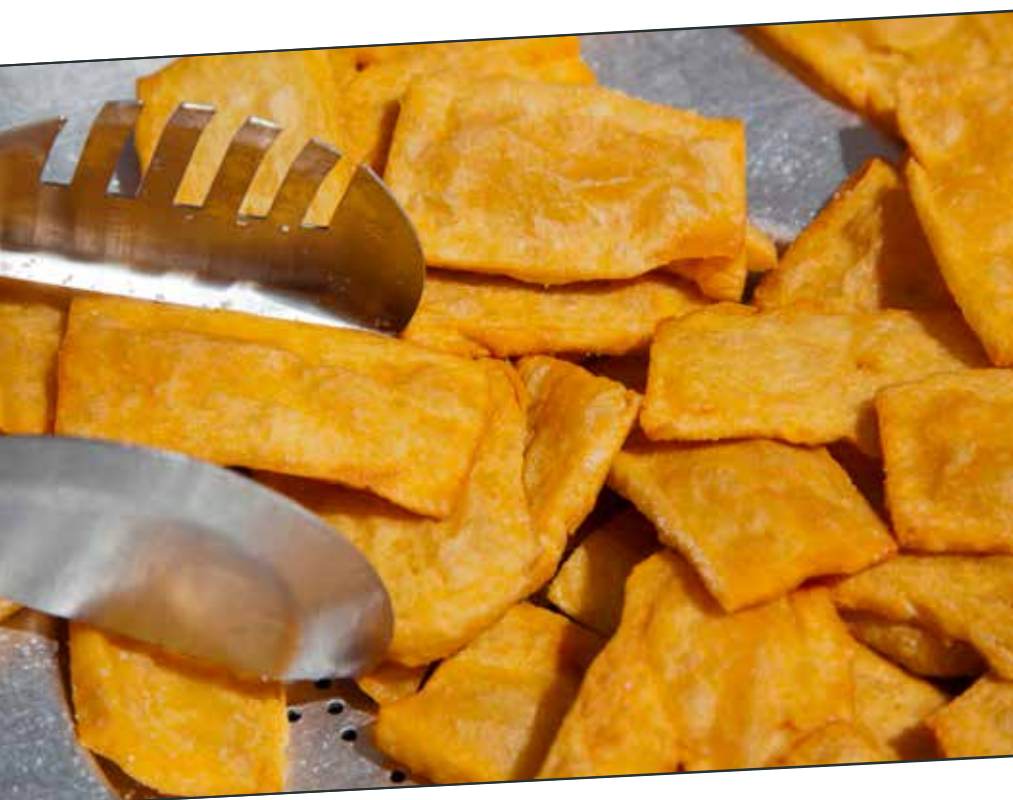
Certified as a Slow-Food Presidium and certainly a unique sensorial experience waiting to be discovered: the chinotto citrus fruit, a genuine symbol of Savona, now typically known as the "Town of the Chinotto Fruit".



The evergreen tree is compact with small leaves and grows to a height of three metres. The fruit of the tree resembles small oranges, which grow in dense clusters and mature from green to orange when ripe between September and November.

Chinotto trees are highly ornamental, the fruits remain on the tree all year, providing bright patches of colour to gardens and parks.

The fruit is used in marmalade, jams and syrups, and the essential oils are used to flavour cocktails. It is bitter and is an essential flavouring agent of the popular Campari aperitif and sodas. The fruit is also candied whole or used in marinades, chutneys, mustard and teas.



Other local specialities include farinata and **panissa**, tasty chickpea snacks. There is an unmistakable sweetness that you can smell in the alleyways of the historical centre especially in the late afternoon. Panissa, sliced, fried and enclosed in a small white loaf continues to be local residents' favourite snack, and is highly recommended.

Riviera delle Palme

Finalborgo



The coastline, just a short distance from Savona, is dotted with charming villages which have preserved their **medieval appearance** almost unaltered: **Noli**, the “**Fifth Maritime Republic**”, a journey back in time along picturesque cobblestone streets surrounded by monumental fortified walls and dominated by the Ursino Castle.

Finalborgo, the **capital of the Del Carretto’s Marquisate**.

Varigotti



Varigotti, a cluster of colourful small Saracens’ houses rising from the sandy beach.

Albenga, which features a well-preserved historic centre with medieval towers.

Whilst a panoramic two-hour drive along the “**Flowers’ Motorway**” leads directly to the Principality of Monaco.

Promoting Tourism and Local Territory

Savona offers plenty of things to do and to see for visitors who want to explore in-depth the richness of this beautiful Ligurian city.



The unique beauty and elegance of the artworks on show at the Ceramics Museum are a clear demonstration of a **local tradition** upheld in Savona and Albisola for more than six centuries. These two local areas together constitute one of the oldest and **most important ceramics centres in the Mediterranean**. Still today, ceramic tradition is one of the most important elements of figurative expression that best represents the history, art and economy of the local area. Steadfast representations of this tradition can be seen in museums, churches, monuments and in general architecture, as well as numerous ceramics companies and factories that are still in business today.

Traditional Albisola Ceramics



INFOPOINT

Infopoint - Savona is a modern tourist information centre, strategically positioned just outside the cruise terminal and a few metres from the city centre. Infopoint providing useful information to up to 90,000 cruise pax every year. In 2015 Costa Cruises, the City of Savona, the Port Authority and the Chamber of Commerce signed a MOU aimed at improving tourism management in Savona.

In 2022, the City of Savona, the Western Ligurian Sea Port Authority and Costa Cruises updated and renewed the MOU.

Genova City Airport

Genova “Christopher Columbus” City Airport sits a mere 6 km from Genoa’s Cruise Terminal and city centre, with direct access to the motorway. Whilst Savona’s Cruise Terminal is located just 42 km away.

The airport can accommodate the most advanced aircraft on a 3,065-metre retrofitted runway and offers direct flights to major European destinations.

The baggage handling system and reclaim procedures have recently been upgraded to speed up operations and facilitate passengers’ movement between the airport and the city centre and cruise port.

Special procedures can be agreed with shipping companies and airlines in order to facilitate the transfer of passengers and baggage between ship and aircraft, such as offsite check-in and air-side/sea-side baggage transport. In addition, a new boarding area for extra-Schengen flights opened in 2022.

Airport terminal expansion works have been completed. The construction of the new Terminal East wing, inaugurated on 19 March, with an investment of 15 million euros; covers 5,500 sqm and is set to boost overall annual passenger throughput capacity to 3 million representing a major step in the large-scale redevelopment of the Ligurian international airport.

Whilst the refurbishment of the dedicated passenger service area of the existing facility is underway in a 20-million euro investment programme.

Coach parking and taxi ranks are located next to the terminal, whilst a 900-vehicle car park sits in front of the passenger terminal.

The airport offers on-terminal shuttle bus services to Brignole and Piazza Principe mainline railway stations in the city centre and to Sestri Ponente-Airport station.



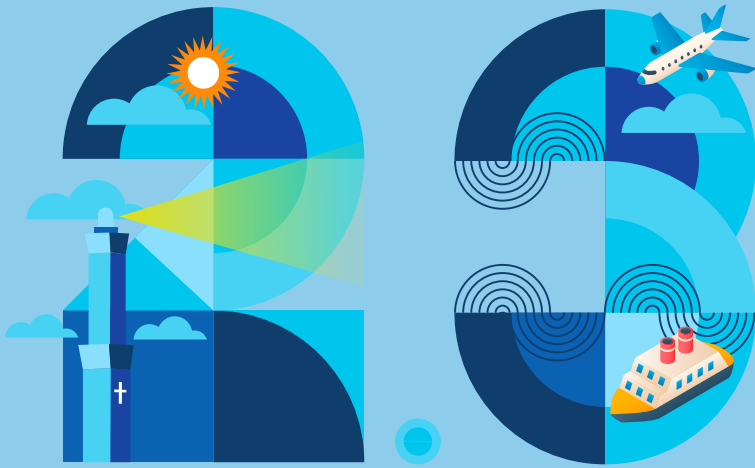
By 2026, Genova City Airport will be connected by a moving walkway to a new dedicated mainline railway station, Sestri/Erzelli, offering incoming passengers the opportunity to reach the the city centre and Stazioni Marittime Cruise Terminal in 12 minutes, via a regular shuttle train service.

Plans are afoot to create an integrated mobility hub to maximise access by public transport to the Cruise Terminal. Piazza Principe International Station is today walking distance from the passenger port across busy roadways, but by the forthcoming year Stazioni Marittime will upgrade an

existing 350-metre barrier-free underground pedestrian route connecting the railway station directly to the cruise terminal, with direct access to the quay line via a new high-capacity lift.



PORTS OF GENOA RECORD CRUISE PASSENGER THROUGHPUT IN 2024

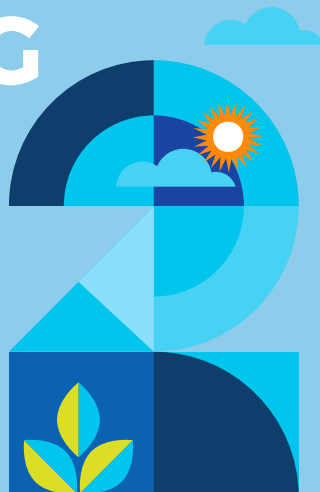


MELN
CRUIS PAX



CALLS

RANKING



ND

IN ITALY



Cruise Terminal Operators

STAZIONI MARITTIME GENOVA
Ponte dei Mille
16126 Genova (GE) - Italy
Tel. +39 010 0898335
mail@smge.it
www.smge.it

PALACROCIERE
Calata delle Vele, Darsena Nuova
17100 Savona (SV) - Italy
Tel. +39 019 8388145
palacrocieresv@costamed.it
www.palacrocieresavona.it

